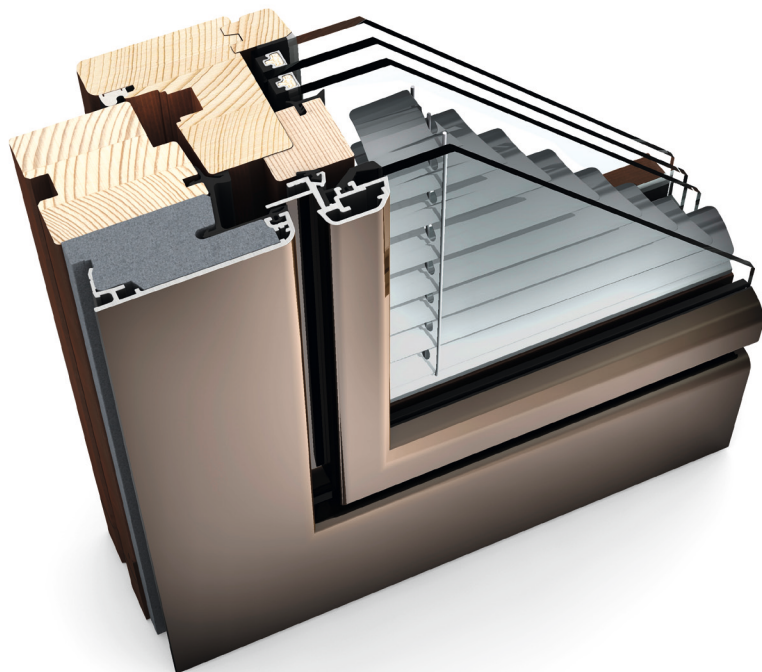




ambiente

Internorm®

# HV 350 TIMBER/ALUMINIUM WINDOW WITH INTEGRATED BLINDS



**TU**  
Graz  
PASSIVHAUSTAUGLICH  
NACH RICHTLINIE WA15/2

## CHARACTERISTICS

**Thermal insulation**  
(in  $W/m^2K$ )



$U_w$  as low as 0.60

**Sound reduction**  
(in dB)



up to 47

**Security**



up to RC2

**Locking**



concealed

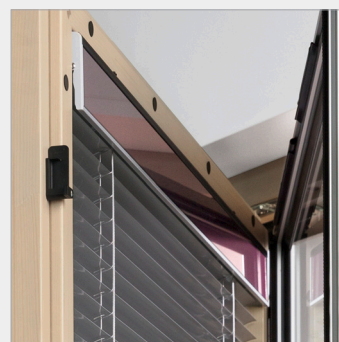
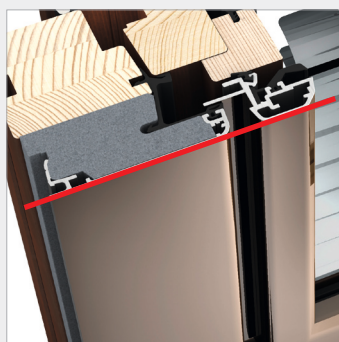
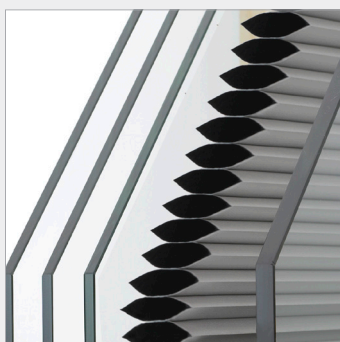
**Construction depth**  
(in mm)



85

**I-tec Glazing**

**I-tec Shading**

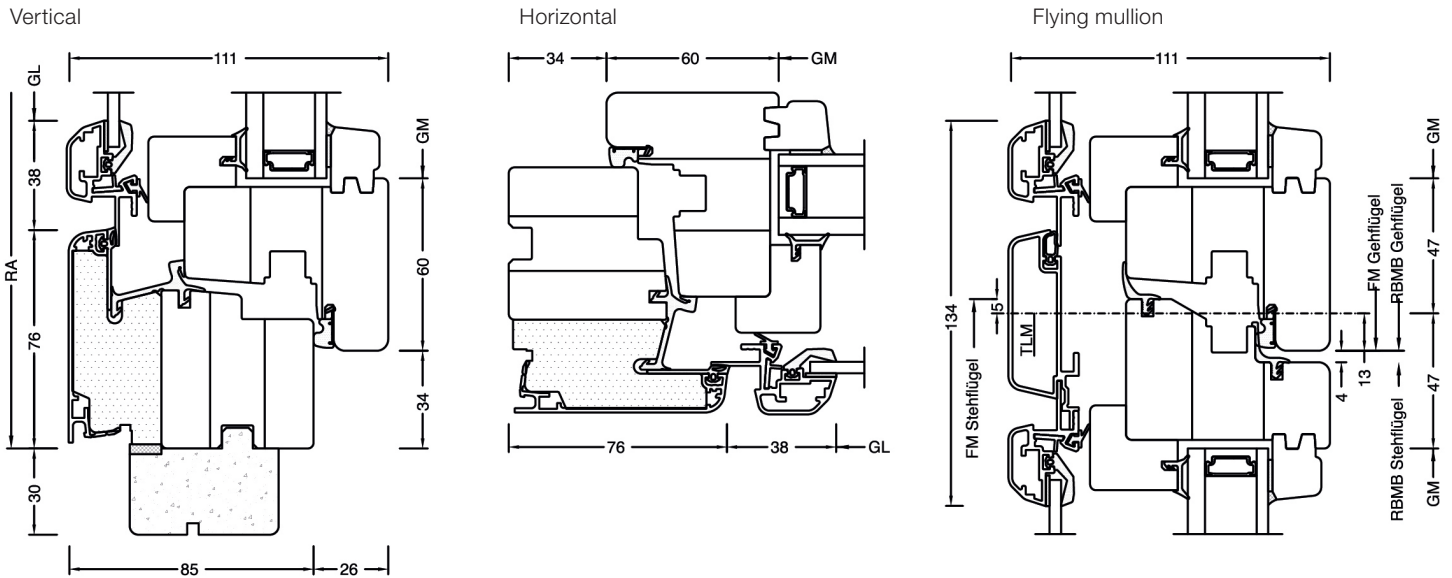


### HV 350

The sun and privacy protection integrates harmoniously into this flush window and offers quadruple protection all in one window with excellent thermal insulation and sound reduction values. Blinds, Venetian blinds or Duette® blinds are situated between the panes and therefore protected from dust. The energy self-sufficient I-tec shading does not require any external power source due to the photovoltaic module and batteries. Integrated automatic functions such as day/night recognition and intelligent heat protection can be activated simply via your tablet or Smartphone, I-tec Smart Window is also available.

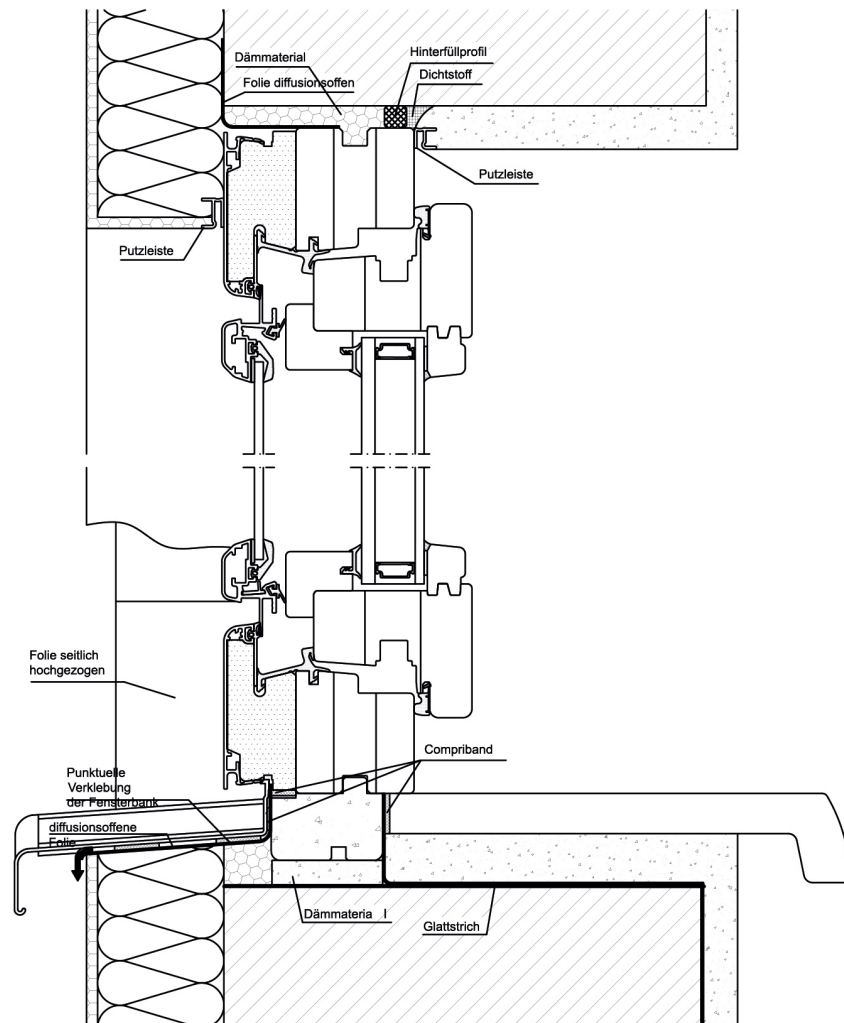


## Sections

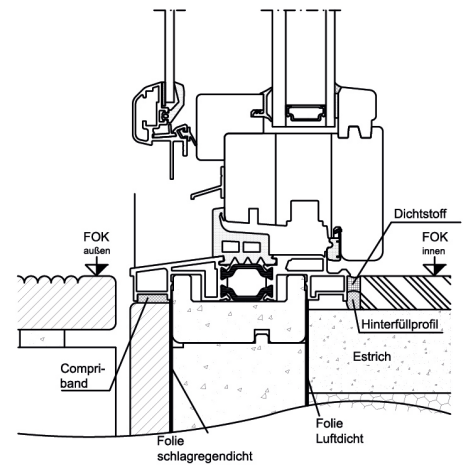


## Construction connections

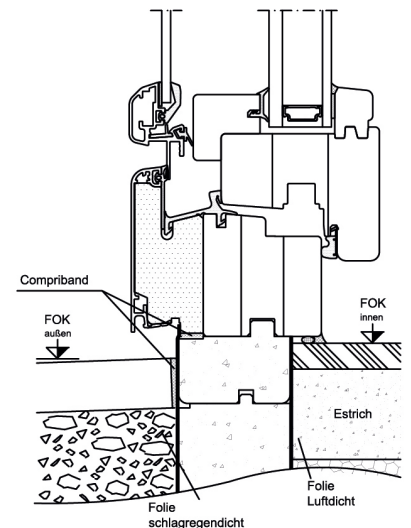
Putzanschluss innen und  
Vollwärmeschutz außen.  
Unterer Anschluss mit Alu-Sohlbank.



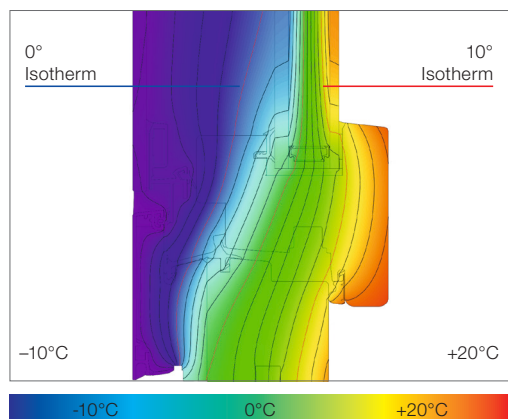
Bauanschluss  
mit Alu-Bodenschwelle 30mm.



Bauanschluss  
mit Purenitprofil unten



**ATTENTION!** Depicted drawing is symbolic only. Please observe national fitting guidelines such as ÖNORM B5320 in its respective valid version.



Optimal isotherm gradient to ensure low amounts of condensation

Due to the deep glass position, tremendous construction depth and the directly glued window panes glazing LIGHT ( $U_g = 0.5 \text{ W/m}^2\text{K}$ ) can achieve a sensational  $U_w$  value of  $0.68 \text{ W/m}^2\text{K}$  (with ISO spacer).

### Technical information

- Insulated timber/thermal foam/aluminium window system with integrated sun and privacy protection fitted between the panes
- Inside: timber type spruce/larch, 3 glued layers, triple surface treatment in 11 standard colours, all RAL colours available
- Outside aluminium: anodised, RAL, highly weather-resistant structure, metallic and timber decor colours available

System	Glass set-up	Glass code	Spacer	Coating	$U_g$ Insul. glass	$U_f$	$\Psi_i$	$U_w$	Thermal certif.	$R_w$	C	Ctr	Sound certif.
HV350	4 // 6/18Ar/b4	100/2KU	Iso	light	1.1	0.88	0.025	0.96**	YES	42	-2	-8	YES
			Alu		1.1	0.88	0.043	1.0**					
	6 // 6/18Ar/b4	151/2KU	Iso		1.1	0.87	0.023	0.95	YES	44	-2	-8	YES
			Alu		1.1	0.87	0.040	0.99					
	4 // 4bESG/10Ar/ 4/10Ar/b4	100/37M	Iso	light	0.8	0.87	0.024	0.81*	NO	41*	-	-	NO
			Alu		0.8	0.87	0.040	0.85*					
	6 // 4bESG/10Ar/ 4/10Ar/b4	151/37M	Iso		0.8	0.86	0.023	0.81	YES	44	-1	-5	YES
			Alu		0.8	0.86	0.039	0.85					
	4 // 4bESG/8Kr/4/ 8Kr/b4	100/3TV	Iso	light	0.7	0.87	0.030	0.75*	NO	41*	-	-	NO
			Alu		0.7	0.87	0.048	0.79*					
	6 // 4bESG/8Kr/ 4/8Kr/b4	151/3TV	Iso		0.7	0.87	0.028	0.75	YES	44	-2	-5	YES
			Alu		0.7	0.87	0.041	0.79					
	6 // 3bESG/10Kr/ 2TVG/10Kr/b3ESG	151/37F	Iso	light	0.6	0.87	0.025	0.68	YES	44	-2	-6	YES
			Alu		0.6	0.87	0.040	0.72					
	6 // 3bESG/12Ar/ 2TVG/12Ar/b3ESG	151/37G	Iso	light	0.7	0.86	0.021	0.73	YES	44	-2	-7	YES
			Alu		0.7	0.86	0.038	0.78					

37G and 37M in HV350 only available in **studio** and **home pure**.

Values for **studio** with test certificates

\*\*Values for **home soft** with test certificate; identical to **home pure** and **ambiente**

### Internorm Window UK

Unit D, Colindale Business Park  
2-10 Carlisle Road, NW9 0HN, London  
Tel.: +44 (0) 208 205 9991

Email: office@internorm.co.uk

01/17