

## HX 300 PANORAMA



Frameless appearance and technologically optimised construction connection

### CHARACTERISTICS

**Thermal insulation**  
(in  $\text{W/m}^2\text{K}$ )



$U_w$  as low as 0.74

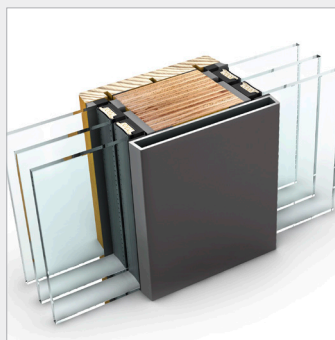
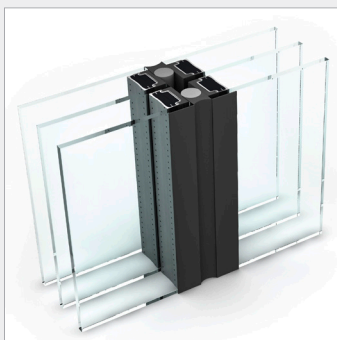
**Sound reduction**  
(in dB)



up to 40



**I-tec Glazing**

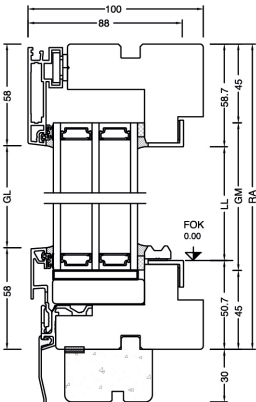


### HX 300

Trendy, narrow glass joints allow discreet transitions of large glass areas.

Glass-dividing mullions can be installed for even larger glazings to ensure the necessary statics. All Internorm timber/aluminium windows (one or two sash) can be integrated into HX 300 upon request.

### Vertical section



Technical drawing of a window frame cross-section. The drawing shows a central window unit with multiple panes, flanked by side panels. Dimensions are indicated at the top and bottom. The top dimensions show a total width of 58 units on each side of the central unit, with a central gap labeled 'GL'. The bottom dimensions show a total width of 58.7 units on each side of the central unit, with a central gap labeled 'LL'. The side panels are labeled 'GM' and 'RA'.

[illegible]

Folie diffusionsoffen (überputzbar)

Dämmmaterial zwischen druckfester Hinterfüllung

Glattstrich

Folie luftdicht (überputzbar)

Putzleiste (gemäß ONorm B6400)

Putzleiste

Achtung!! Die dargestellte Zeichnung ist eine Symbolzeichnung, beachten Sie die nationalen Einbauvorschriften wie z.B. ONORM B5320 in der jeweils gültigen Fassung

Verklebung der Überlappung

FFOK

Stein

Achten Sie auf den richtigen Einbau einer handelsüblichen Wasserrinne

Splittgemisch

Drainage

Hochzug stauwasserdicht bauseits

Abdichtung mit Klebedichtstoff, z.B. Folienkleber

FFOK

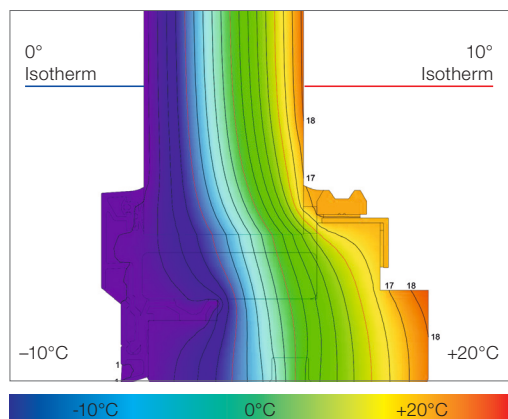
Estrich

Fußbodendämmung

Abdichtung luftdicht

Winkelprofil fix mit Rohdecke und Unterkonstruktion Bodenanschlussprofil verbunden

**ATTENTION!** Depicted drawing is symbolic only. Please observe national fitting guidelines such as ÖNORM B5320 in its respective valid version.



Optimal isotherm gradient to ensure low amounts of condensation

Due to the deep glass position, tremendous construction depth and the directly glued window panes glazing LIGHT ( $U_g = 0.5 \text{ W/m}^2\text{K}$ ) can achieve a sensational  $U_w$  value of  $0.68 \text{ W/m}^2\text{K}$  (with ISO spacer).

### Technical information

- Max. RA 4000 x 2800 mm
- Aluminium profiles cut in mitres and held in place with UPVC and aluminium brackets
- Anodised colours, RAL colours, highly weather-resistant structure, metallic and timber decor colours available for outside aluminium
- Glass thicknesses 28, 48, 54 mm
- Glass panes sealed off continuous inside and outside with transparent silicone

### Construction designs

- One piece fixed frame glazing
- Installation of mullion or vertical glass joint available
- Installation of window/door models available

### Values

System	Glass setup	Glass code	Spacer	Coating	U <sub>g</sub>	U <sub>f</sub>	Psi	U <sub>w</sub>	Thermal cert.	R <sub>w</sub>	C	Ctr	Sound cert.
HX300	4b/18Ar/4/18Ar/b4	3N2	Iso	light	0.5	1.33	0.039	0.74	YES	35	-2	-5	YES
			Iso	SolarXPlus	0.5	1.33	0.039	0.74*	NO				
	4bESG/18Ar/4/18Ar/b4ESG	3T6	Iso	light	0.5	1.33	0.039	0.74*	NO	35*	-2	-5	NO
			Iso	SolarXPlus	0.5	1.33	0.039	0.74*					
	6bESG/18Ar/6ESG/18Ar/b6ESG	3FD	Iso	light	0.5	1.33	0.039	0.74	YES	37	-2	-6	YES
			Iso	SolarXPlus	0.5	1.33	0.039	0.74*	NO				
HX300	6bESG/16Ar/b6ESG	2UF	Iso	light	1.1	1.55	0.052	1.3	YES	34	-1	-3	YES
	44b.2(VSG-S)/15Ar/4/12Ar/b44.2(VSG-S)	3FH	Iso	light	0.7	1.33	0.051	0.94	YES	47	-1	-3	YES

Certificates were calculated/tested with coating **light**

### Internorm Window UK

Unit D, Colindale Business Park  
2-10 Carlisle Road, NW9 0HN, London  
Tel.: +44 (0) 208 205 9991

Email: office@internorm.co.uk